



88 references
30 designs
4 bevelled edges

Creation Zen
The new generation
of acoustic
Luxury Vinyl Tile

Gerflor®



An overwhelming sense of well-being...

A wave of peace and harmony fills the room... Listen to the sounds vanish underfoot, feel the surprising lightness of the tiles and planks, the flooring is installed in a heartbeat... a sigh of relief for the planet.

Zen Creation is Gerflor's new range of acoustic LVTs and was designed (by our teams) to put customers, communities, and the environment first, in line with our mission:

we care / we act

Our Commitments for a Sustainable future

SWISS OAK GOLDEN

SAMPLES



INTERIOR DESIGNER



Class 23-33-34

Product size (mm)	m ² / box	m ² / pallet
Creation 40 Zen		
245 x 1250	4,29	192,9
150 x 750	*	*
500 x 500	4,5	234
Creation 55 Zen		
245 x 1250	3,37	151,6
150 x 750	*	*
500 x 500	3,75	195
Creation 70 Zen		
245 x 1250	3,37	151,6
150 x 750	*	*
500 x 500	3,75	195

* Consult us



High acoustic performance & comfort



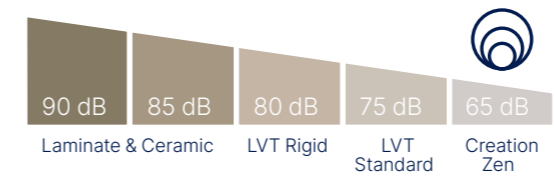
Zen for the planet

- Made in France
- Recycled content and 100% recyclable
- Lowest carbon footprint of all loose lay LVTs
- Phthalate-free*



Zen for the user

- Protecshield™ surface treatment, microscratch-resistant and easy to clean
- Acoustic insulation: 20 dB
- Better impact sound absorption: 65 dB



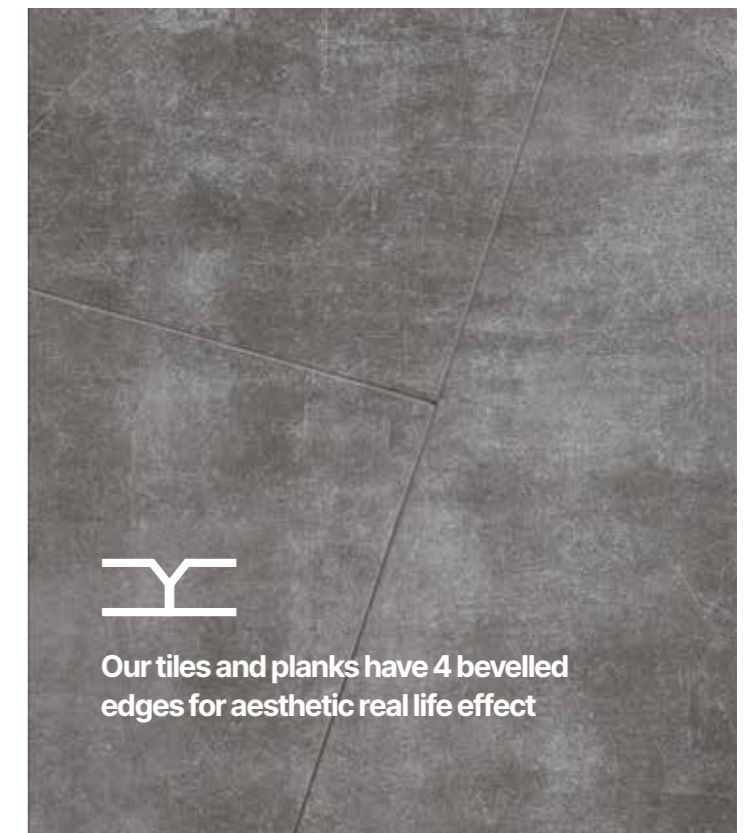
Zen for the installer

- Loose lay installation on to tackifier
- Flexible and lightweight to make cutting easier
- Replaceable: quick installation and removal

* Excluding recycled content
** Creation 55 Zen / Creation 70 Zen



PARKER STATION



Our tiles and planks have 4 bevelled edges for aesthetic real life effect

22
CORE
DESIGNS

Core Designs

- 22 designs for low to high traffic areas



New designs

- 4 bevelled edges
- Available in 3 sizes
- MyCreation Zen custom designs available



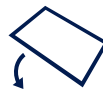
New surface treatment

- Extra-matt appearance
- Micro-scratch-resistant
- Easy maintenance



The whole picture

- S0001 skirting board matches your floor or in plain white to paint and match other design elements in the room



Loose lay installation with tackifier or glue down



Creation 40 Zen

- An **aesthetic & economical solution** for homes

✓ Integrated acoustic layer : **20 dB**

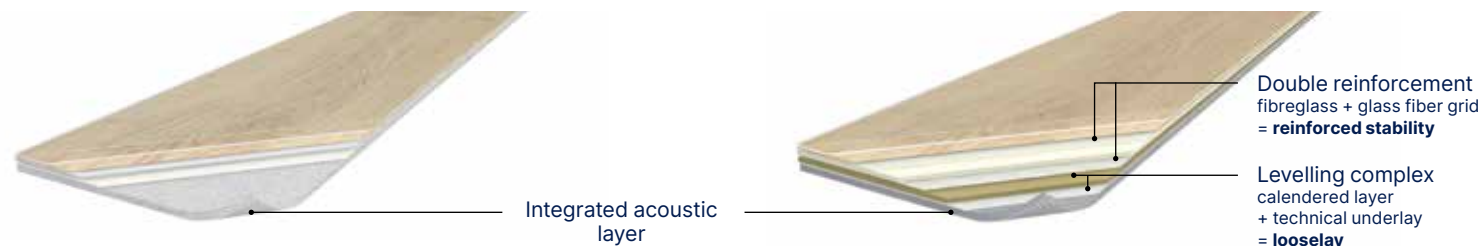
Creation 55 Zen - Creation 70 Zen

- An exclusive, **eco-designed** solution for **quick installation** in high-traffic locations

✓ **Made from at least 15% recycled PVC**

✓ 2 reinforcements = improved stability

✓ Integrated acoustic layer : **20 dB**



Patent pending

Code	Colors	Creation 40 Zen	Creation 55 Zen	Creation 70 Zen	Design skirting	Design coverstrip
1483	Bloom uni black	*	500×500	500×500	-	C023
1484	Bloom uni brown	*	500×500	500×500	-	-
1482	Bloom uni clear	*	500×500	500×500	-	-
1413	Bloom uni grey	500×500	500×500	500×500	S096	C016
0963	Bloom uni perle	500×500	500×500	500×500	-	C017
1485	Bloom uni souris	500×500	500×500	500×500	-	C016
1412	Bloom uni taupe	500×500	500×500	500×500	S095	C019
1415	Bostonian oak	245×1250	245×1250	245×1250	S016	C006
1416	Bostonian oak beige	245×1250	245×1250	245×1250	S017	C019
1421	Bostonian oak dark	245×1250	245×1250	245×1250	-	-
1478	Bostonian oak kraft	245×1250	245×1250	245×1250	S201	C002
1422	Bostonian oak medium	245×1250	245×1250	245×1250	-	-
0817	Cocoon metal	*	500×500	500×500	-	-
1063	Finesse brown	500×500	500×500	500×500	-	-
1488	Finesse denim	*	500×500	500×500	-	-
1487	Finesse green	*	500×500	500×500	-	-
1489	Finesse grey	500×500	500×500	500×500	-	C019
1064	Finesse nature	*	500×500	500×500	-	C019
1066	Finesse poudre	*	500×500	500×500	-	-
1480	Nature oak Honey	245×1250	245×1250	245×1250	S192	C007
1479	Nature oak Kraft	245×1250 150×750	245×1250 150×750	245×1250 150×750	-	C004
1481	Nature oak Taupe	245×1250 150×750	245×1250 150×750	245×1250 150×750	-	C014
1486	Parker clear	500×500	500×500	500×500	-	C019
1414	Parker station	500×500	500×500	500×500	-	C015
0773	Ranch	245×1250	245×1250	245×1250	S053	C014
0953	Ranch anthracite	245×1250	245×1250	245×1250	-	-
1418	Swiss oak beige	245×1250	245×1250	245×1250	S011	B208
1419	Swiss oak golden	245×1250	245×1250	245×1250	S015	C003
1420	Swiss oak pearl	245×1250	245×1250	245×1250	S014	C010
1417	Twist	245×1250	245×1250	245×1250	S039	C011

(*) colors available on minimum order 700 sqm



FINESSE GREEN / BOSTONIAN OAK BEIGE



Swiss Oak Pearl 1420
NCS : 3500-N / LRV : 36.5

 245 × 1250 [C40 Zen](#) [C55 Zen](#) [C70 Zen](#)



Nature Oak Honey 1480
NCS : 5005-Y30R / LRV : 19.5

 245 × 1250 [C40 Zen](#) [C55 Zen](#) [C70 Zen](#)



Nature Oak Taupe 1481
NCS : 5005-Y50R / LRV : 20.7

 245 × 1250  150 × 750 [C40 Zen](#) [C55 Zen](#) [C70 Zen](#)



Swiss Oak Golden 1419
NCS : 4020-Y30R / LRV : 26.4

 245 × 1250 [C40 Zen](#) [C55 Zen](#) [C70 Zen](#)



Ranch 0773
NCS : 5005-Y20R / LRV : 25.3

 245 × 1250 [C40 Zen](#) [C55 Zen](#) [C70 Zen](#)



Ranch Anthracite 0953  245 × 1250 [C40 Zen](#) [C55 Zen](#) [C70 Zen](#)
NCS : 6005-Y80R / LRV : 16.4



Bostonian Oak Dark 1421  245 × 1250 [C40 Zen](#) [C55 Zen](#) [C70 Zen](#)
NCS : 6005-Y80R / LRV : 15

DESIGN SHADE VARIATION :  Light  Medium  High



RANCH



Nature Oak Kraft 1479
NCS : 4010-Y30R / LRV : 32.5

 245 x 1250  150 x 750 [C40 Zen](#) [C55 Zen](#) [C70 Zen](#)



Bostonian Oak Kraft 1478
NCS : 3010-Y40R / LRV : 36.0

 245 x 1250 [C40 Zen](#) [C55 Zen](#) [C70 Zen](#)



NATURE OAK KRAFT



Swiss Oak Beige 1418
NCS : 3010-Y50R / LRV : 44.1

 245 x 1250 [C40 Zen](#) [C55 Zen](#) [C70 Zen](#)



Twist 1417
NCS : 3010-Y50R / LRV : 44

 245 x 1250 [C40 Zen](#) [C55 Zen](#) [C70 Zen](#)



Bostonian Oak Beige 1416
NCS : 4005-Y50R / LRV : 31.9

 245 x 1250 [C40 Zen](#) [C55 Zen](#) [C70 Zen](#)



Bostonian Oak 1415
NCS : 4010-Y50R / LRV : 26.2

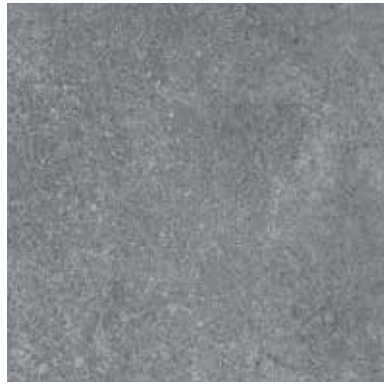
 245 x 1250 [C40 Zen](#) [C55 Zen](#) [C70 Zen](#)



Bostonian Oak Medium 1422
NCS : 6010-Y50R / LRV : 15.6

 245 x 1250 [C40 Zen](#) [C55 Zen](#) [C70 Zen](#)

DESIGN SHADE VARIATION :  Light  Medium  High



NCS : 5005-R50B
LRV : 21.8

Bloom Uni Grey 1413
◇ 500 × 500 [C40 Zen](#) [C55 Zen](#) [C70 Zen](#)



NCS : 3005-R20B
LRV : 43.0

Bloom Uni Perle 0963
◇ 500 × 500 [C40 Zen](#) [C55 Zen](#) [C70 Zen](#)



NCS : 3010-R10B
LRV : 40.5

Finesse Poudre 1066
◇ 500 × 500 [C55 Zen](#) [C70 Zen](#)



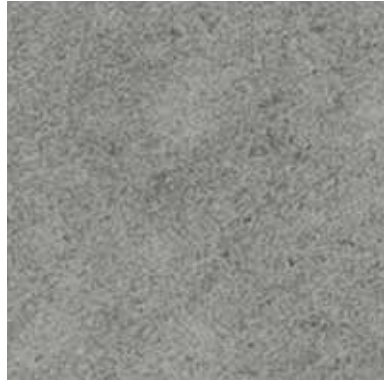
NCS : 3502-Y
LRV : 37.6

Finesse Nature 1064
◇ 500 × 500 [C55 Zen](#) [C70 Zen](#)



NCS : 3005-Y50R
LRV : 45.1

Bloom Uni Clear 1482
◇ 500 × 500 [C55 Zen](#) [C70 Zen](#)



NCS : 4502-R
LRV : 27.3

Bloom Uni Souris 1485
◇ 500 × 500 [C40 Zen](#) [C55 Zen](#) [C70 Zen](#)



NCS : 4005-Y80R
LRV : 29.5

Finesse Grey 1489
◇ 500 × 500 [C40 Zen](#) [C55 Zen](#) [C70 Zen](#)



NCS : 5010-R90B
LRV : 19.7

Finesse Denim 1488
◇ 500 × 500 [C55 Zen](#) [C70 Zen](#)



NCS : 4005-Y50R
LRV : 29.0

Parker Clear 1486
◇ 500 × 500 [C40 Zen](#) [C55 Zen](#) [C70 Zen](#)



NCS : 4502-Y
LRV : 27.7

Bloom Uni Taupe 1412
◇ 500 × 500 [C40 Zen](#) [C55 Zen](#) [C70 Zen](#)



FINESSE NATURE / BLOOM UNI TAUPE



NCS : 6000-N
LRV : 17.1

Parker Station 1414
◇ 500 × 500 [C40 Zen](#) [C55 Zen](#) [C70 Zen](#)



NCS : 4005-Y20R
LRV : 34.7

Cocoon Metal 0817
◇ 500 × 500 [C55 Zen](#) [C70 Zen](#)



NCS : 3010-Y50R
LRV : 36.0

Finesse Brown 1063
◇ 500 × 500 [C40 Zen](#) [C55 Zen](#) [C70 Zen](#)



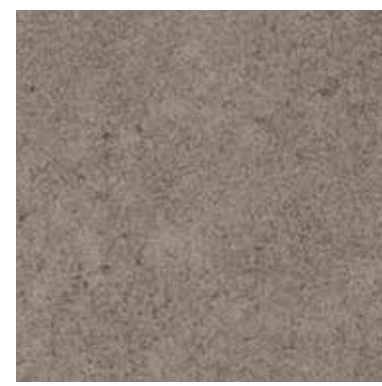
NCS : 8000-N
LRV : 5.8

Bloom Uni Black 1483
◇ 500 × 500 [C55 Zen](#) [C70 Zen](#)



NCS : 5010-B70G
LRV : 20.7

Finesse Green 1487
◇ 500 × 500 [C55 Zen](#) [C70 Zen](#)







NCS : 5005-Y50R
LRV : 22.3

Bloom Uni Brown 1484
◇ 500 × 500 [C55 Zen](#) [C70 Zen](#)



FINESSE BROWN



	Creation 40 Zen			Creation 55 Zen			Creation 70 Zen				
Description											
Total Thickness	EN ISO 24346	mm	3.60			4.25			4.35		
Thickness of the wearlayer	EN ISO 24340	mm	0.40			0.63			0.70		
Weight	EN ISO 23997	g/m ²	2675			3570			3670		
Size	EN ISO 24342	mm	245 × 1250	150 × 750	500 × 500	245 × 1250	150 × 750	500 × 500	245 × 1250	150 × 750	500 × 500
Number of planks or tiles per box	-	m ²	14 / 4,29	*	18 / 4.50	11 / 3,37	*	15 / 3,75	11 / 3,37	*	15 / 3,75
Classification											
Norm/Product Specification	-	-	EN ISO 11638 (ex EN 651)			EN ISO 11638 (ex EN 651)			EN ISO 11638 (ex EN 651)		
European Classification	EN ISO 10874	class	23-32			33-42			34-42		
Room impact	NFS 31074	dB	< 65			< 65			< 65		
Fire Rating	EN 13 501-1	class	Bfl-s1			Bfl-s1			Bfl-s1		
Static Electrical	EN 1815	kV	< 2			< 2			< 2		
Slip Resistance Wet	DIN 51130	class	R10			R10			R10		
Performances											
Wear Resistance	EN 660.2	mm ³	< 2.0			< 2.0			< 2.0		
Wear Group	QB 30	group	T			T			T		
Dimensional stability (norm)	EN ISO 23999	%	≤ 0.25			≤ 0.25			≤ 0.25		
Dimensional stability (average measured value)	EN ISO 23999	%	≤ 0.05			≤ 0.03			≤ 0.03		
Impact sound insulation	EN ISO 717-2	dB	20			20			20		
Residual Indentation (norm)	EN ISO 24343-1	mm	≤ 0.20			≤ 0.20			≤ 0.20		
Residual Indentation (average measured value)	EN ISO 24343-1	mm	0.12			0.12			0.12		
Castor chair test	ISO 4918	-	OK			OK			OK		
Thermal Conductivity	EN ISO 10456	W/(m.K)	0.25			0.25			0.25		
Colour Fastness	EN 20 105-B02	degree	≥ 6			≥ 6			≥ 6		
Chemical Products Resistance	EN ISO 26987	class	OK			OK			OK		
Surface Treatment	-		ProtecShield™			ProtecShield™			ProtecShield™		
Environment / Indoor air quality											
TVOC after 28 days	ISO 16000-6	µg/ m ³	< 10			< 10			< 10		
CE Marking											
	EN 14041	-									

* Numbers of tiles /m² box: contact us

Installation and Maintenance Guidelines, Complementary ranges available on our Gerflor website.

 Rubber leaves indelible stains on vinyl floorings: do not use mats with rubber backing and replace tubular furniture feet with those made of PVC or polyamide. Place mats of sufficient length at entrances to reduce outside sources of dirt.

IMPORTANT: The information contained in this document is valid from 01/04/2023 and is subject to change at any time without notice. In the context of constantly changing technology, our customers are responsible, prior to any use, for checking with us that this document is the version in force.

We care / we act Our Commitments for a Sustainable future


CARBON FOOTPRINT*
 -20 % kg CO₂ equivalent /m² between 2020 and 2025


BIOSOURCED CONTENT**
 10 % by 2025


RECYCLED CONTENT
 30 % by 2025


ADHESIVE FREE***
 35 % d'ici à 2025


ANNUAL VOLUME RECYCLED
 60 000 t by 2025



* Scopes 1 and 2 defined in the GHG protocol ** % of activity with biosourced materials *** % of activity - adhesive free solution